

DESCRIPTION

DL-6CHL-CM60 Chain Plate Wood/Coal Drying Machine is suitable for continuous tea production lines and drying fruits, vegetables, meat, etc., saving labor and energy. Made of 6mm super alloy steel with high-quality diesel burners and efficient heat exchange devices, it features rapid heating and low heat loss. Equipped with a high-power motor + hot air circulation system, it dehumidifies stably, saves fuel (120kg wood per hour tested), adjusts air volume and drying time, operates quietly with minimal tea damage to ensure quality. Supporting stainless steel and size customization, it's the preferred choice for mass production.

ADVANTAGE

Fuel Flexibility Supports wood and coal as fuel, with low fuel cost and strong adaptability to regions with abundant biomass resources (e.g., tea-growing mountains).

Continuous Operation Chain plate conveyor enables continuous feeding and discharging, avoiding the inefficiency of batch drying, and is suitable for medium and small tea processing plants with stable output.

Uniform Drying Even hot air distribution and stable conveyor speed ensure that each part of the tea is heated consistently, reducing the rate of substandard products (e.g., over-dried or damp tea).

Simple Operation & Maintenance The structure is relatively simple, with low requirements for operators; the chain plate and combustion chamber are easy to clean and maintain.

APPLICATION

Tea Variety Suitable for the drying process of green tea, black tea, oolong tea, dark tea, and other major tea types (adjustable temperature to match different tea processing techniques).

Production Scale Medium and small tea processing plants, family workshops, or tea cooperatives (with estimated processing capacity of 30-80 kg/h, matching the output of small and medium-sized production lines).

Regional Adaptation Areas with convenient access to wood/coal (e.g., mountainous tea areas in southern China, Southeast Asia) – no dependence on electricity or natural gas, reducing energy constraints.

[Chain Plate Tea Drying Machine](#) is suitable for processing black / green / oolong / white / dark / herbal tea, the following is the working time required for the above tea production.

Type Of Tea	Working Time
Black Tea	10-30 Minutes
Green Tea	10-30 Minutes
White Tea	10-30 Minutes
Oolong Tea	10-30 Minutes
Herbal Tea	10-30 Minutes

The above data is for reference only, and the specific processing time shall be determined according to the actual situation.

SPECIFICATION

[Wood Coal Heating Chain Plate Tea Drying Machine](#) specification list:

Model		DL-6CHL-CM60
Size		12500×2120×2230 mm
Voltage		380V
Drying area		60 m ²
Drying plate later		8
Drying time		8-90 min
Heating element		Hot air stove
Fuel		Wood/coal/pellet fuels
Oven model		FP-150
Drive motor	Power	2.2 KW
	Speed	1400 rpm
	Voltage	220 V
Feed motor	Power	0.55 kw
	Speed	1400 rpm
	Voltage	220 V
Moisture content of wet tea		≈ 50%
Moisture content of dried tea		≤5%
Weight loss per m ² per hour		3 kg
Capacity for wet tea		570 kg/h
Capacity for dried tea		300 kg/h

Wood coal consumption for each machine :

Drying Area	10-20 m ²	24-32 m ²	40-60 m ²
Capacity	40-105 kg/h	140-210 kg/h	290-570 kg/h
Stove Model	FP-100	FP-120	FP-150
Wood consumption	120-140 kg/h	170-190 kg/h	210-240 kg/h
Coal Consumption	60-70 kg/h	80-90 kg/h	110-120 kg/h
1kg wood = 3000 kilocalorie 1kg coal = 6500 kilocalorie			

Specification of all of [Wood Coal Heating Chain Plate Tea Drying Machine](#).

Model	Drum Diameter	Drum Length	Motor Power	Capacity
DL-6CSTL-CM40	40 cm	1800 mm	0.75 kw	25 kg/h
DL-6CSTL-CM50	50 cm	2600 mm	0.75 kw	50 kg/h
DL-6CSTL-CM60	60 cm	3000 mm	1.1 kw	80 kg/h
DL-6CSTL-CM80	80 cm	4000 mm	1.1 kw	150 kg/h
DL-6CSTL-CM100	100 cm	5000 mm	3.5 kw	400 kg/h
DL-6CSTL-CM110	110 cm	6000 mm	3.5 kw	500 kg/h
DL-6CSTL-CM120	120 cm	7000 mm	3.5 kw	700 kg/h

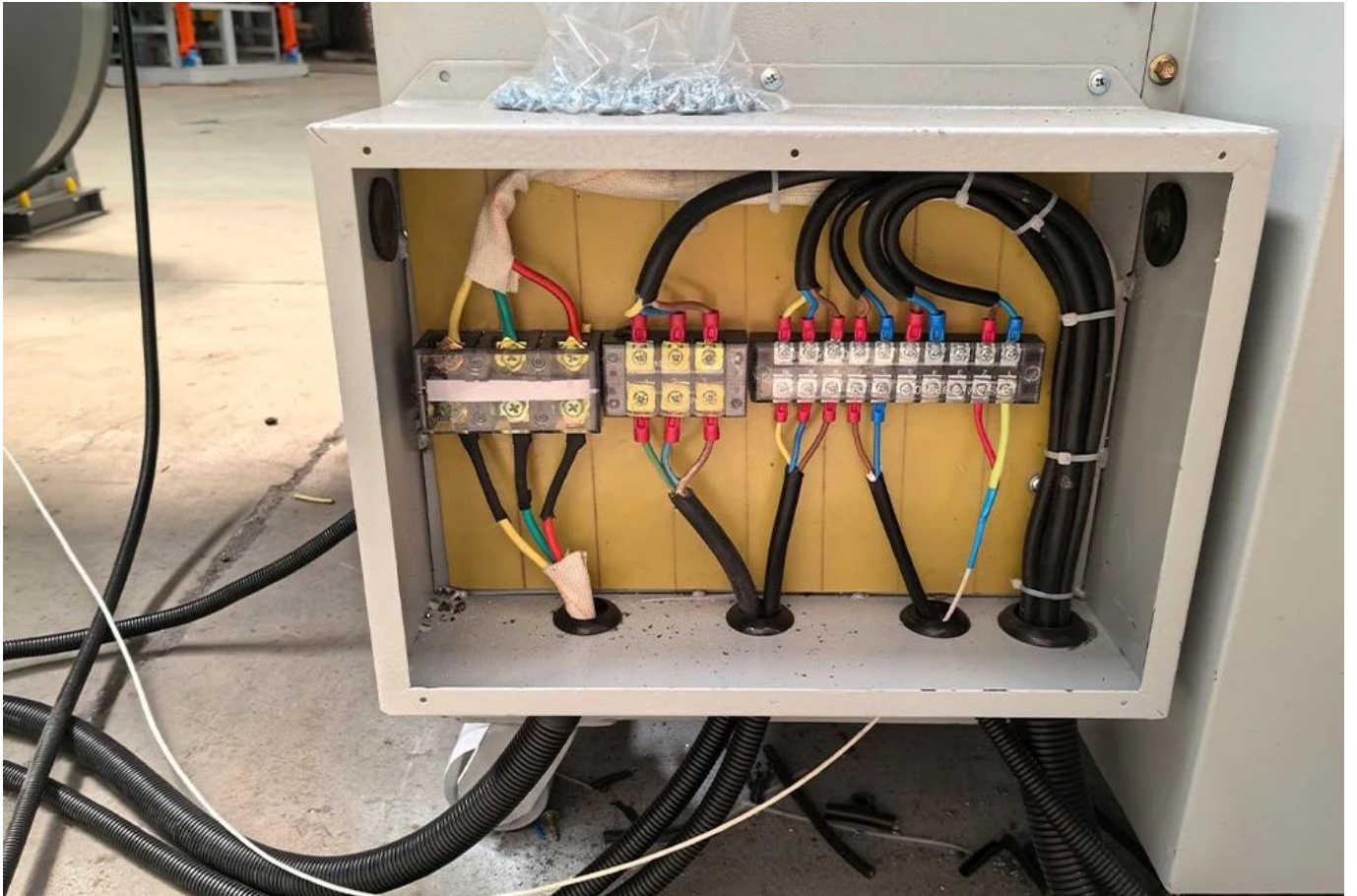
The above data source: our local loose leaf tea, moisture content of wet tea : ≈

50%, moisture content of dried tea : $\leq 5\%$.

If you have special need, it can be customized according to the needs of customers.

PHOTOS







CONTACT

If you are interested in this product, please contact us to get the price.



↑ ↑ Click the icon to get the latest price directly ↑ ↑



Quanzhou Deli Agroforestry Machinery Co., Ltd.

12# Dongqing Road, Chengxiang Town,

Anxi County, Quanzhou, Fujian, China (Mainland)

WhatsApp / WeChat: 0086-18120033767

Email : info@delijx.com

Web: www.delijx.com

↓ ↓ You can also leave your contact information at the bottom.
We usually contact you in about 10 minutes ↓ ↓