

DESCRIPTION

DL-6CRQ-20Z HRS Gyrovane rotorvane tea machine is suitable for the rolling, twisting, extruding and tearing of tea in the initial process of CTC tea, so as to obtain higher cell breakage rate and better particle shape. We also supply all types of green tea rolling machine, custom quickly!

ADVANTAGE

1. Strong cutting ability, rapid cutting, good granules and low temperature rise;
2. High output, continuous production, low labor intensity;
3. Compact structure, easy installation, easy cleaning and smooth operation;
4. Can be combined with single or dual machine to form a higher processing line.

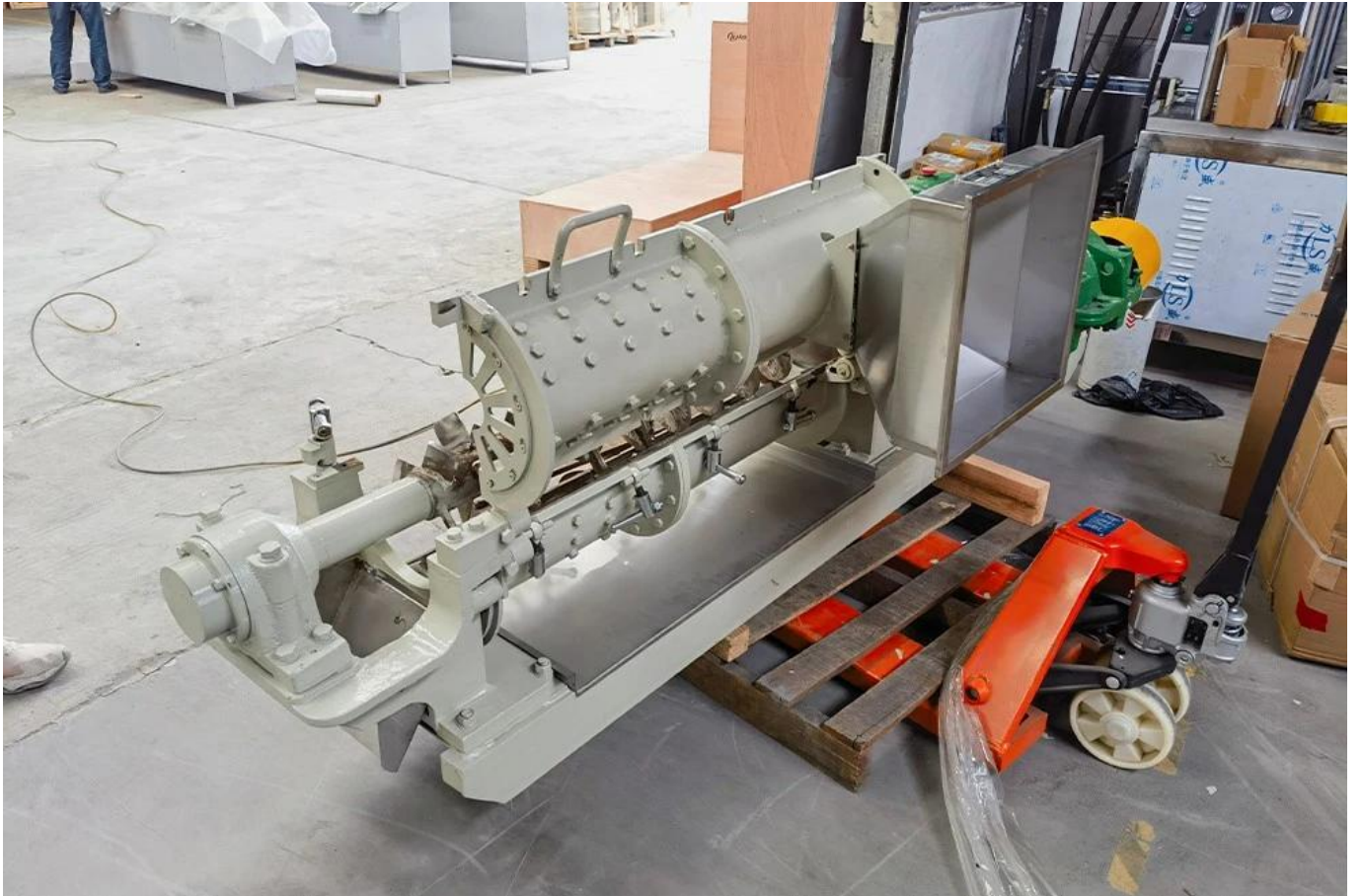
SPECIFICATION

DL-6CRQ-20Z HRS Gyrovane rotorvane CTC tea machine specification:

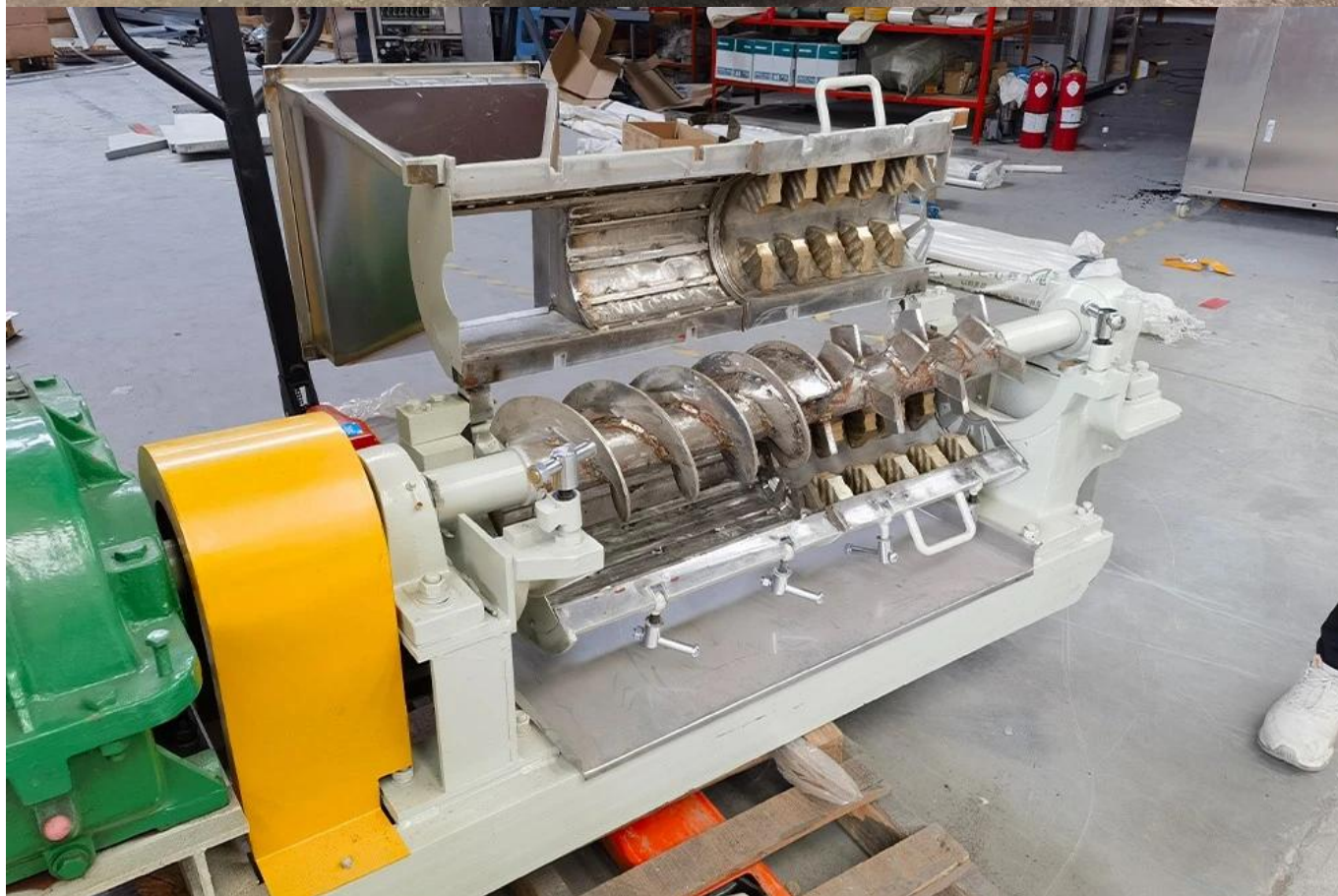
Model		DL-6CRQ-20Z
Dimensions		2560×815×800 mm
Diameter of Roller		200 mm
Length of Roller		915 mm
Spindle speed		34 r/min
Motor	power	7.5 kW
	speed	1400 r/min
	Rated voltage	380 V
Net Weight		600 KG
Efficiency		1000 kg/h

If you have special need, it can be customized according to the needs of customers.

PHOTOS







CONTACT

If you are interested in this product, please contact us to get the

price.



↑ ↑ Click the icon to get the latest price directly ↑ ↑

The background of the advertisement is a photograph of a tea plantation. The tea bushes are in the foreground, and the hills in the background are covered with more tea plants. The sky is overcast and foggy.


Assistant
Deli Tea Machine

Quanzhou Deli Agroforestry Machinery Co., Ltd.
12# Dongqing Road, Chengxiang Town,
Anxi County, Quanzhou, Fujian, China (Mainland)

WhatsApp / WeChat: 0086-18120033767
Email : info@delijx.com
Web: www.delijx.com

**↓ ↓ You can also leave your contact information at the bottom.
We usually contact you in about 10 minutes ↓ ↓**